

### Further Information

Parks Victoria  
Information Line  
Ph: 13 1963  
[www.parkweb.vic.gov.au](http://www.parkweb.vic.gov.au)

Point Nepean Visitor Centre  
PORTSEA 3944  
Ph. 5984 4276

Parks Victoria District Office  
P.O. Box 400  
ROSEBUD 3939  
Ph. 5986 9100

Peninsula Visitor  
Information Centre  
Point Nepean Road  
DROMANA 3936  
Ph. 5987 3078

### Bookings and entrance fees

To prevent overcrowding and damage to the fragile environment, no more than 600 people are permitted in the Point Nepean area at any one time.

**Bookings are essential for groups, and entry fees are payable.**

**Telephone (03) 5984 4276** for further information and bookings.

There are fee concessions for groups, senior citizens and families. (Conditions apply)

### Disabled Access

Point Nepean caters for people with a range of disabilities. There is a sealed walking track to the Observatory Point beach from Gunners Car Park suitable for wheelchairs. All upper areas of Fort Nepean, Fort Pearce and Eagles Nest are also suitable for wheelchairs. The Transport also is able to fit wheel chairs on board however please notify staff at the Visitor Centre.

### Cycling to Point Nepean

Cyclist may use the section of road between the Visitor Centre and Fort Pearce.

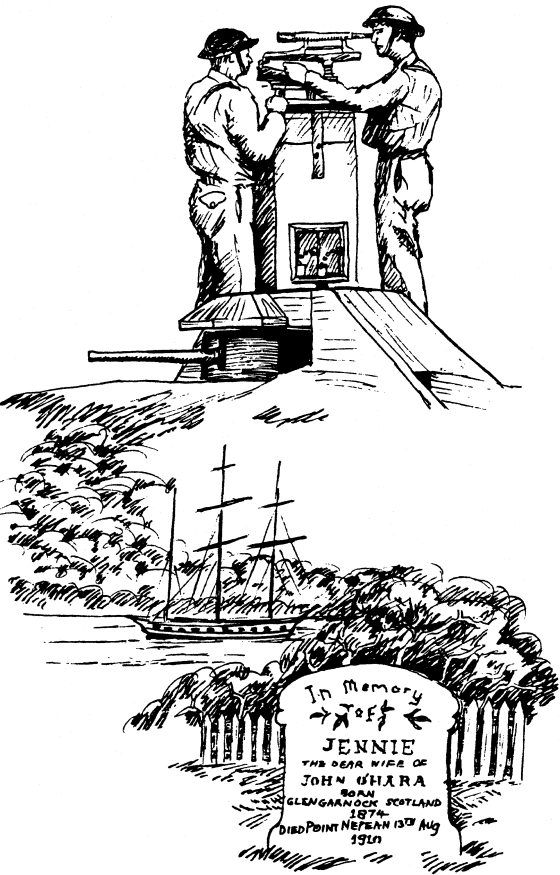
- Please obtain entrance ticket before riding.
- Cycling is not permitted beyond Fort Pearce.
- Bicycle racks are located at Fort Pearce, Cheviot Hill and Gunners Car Park.
- Cycling is prohibited on walking tracks.
- Cyclists must wear an approved helmet.
- Motorised bicycles, scooters, or similiar not permitted.
- Roller blades, scooters and other rolling devices are permitted and must adhere to the same regulations as bicycles.

### Walking

Visitors to the park may walk from the Visitor Centre or Gunners Car Park on any day. Entrance fees are payable. The total return distance when staring at Gunners Car Park is 7km and includes 4 self guided walks shown on this leaflet. Drinkable water is only available at Gunners Cottage and the Visitor Centre. Toilets are available at the Visitor Centre, Gunners Car Park and Fort Nepean. Please come prepared for the weather.

### For Your Safety

- At all times, stay on defined tracks and within areas open to the public. Other areas may contain unexploded shells or other ammunition.
- Observe warning signs and fences.
- Both ocean and bay beaches at Point Nepean are hazardous because of strong currents, undertows, unexpected big waves and deep water.
- All native plants and animals are protected by law. This applies to both marine and land flora and fauna.
- Fires are not permitted in the Mornington Peninsula National Park.
- Firearms are prohibited.
- Access to the park by boat is prohibited.
- Swimming, diving, surfing, fishing and entering the water is not permitted.
- **In case of emergency, please call the Visitor Centre for assistance. Phone 5984 4276.**



May 2004



Parks Victoria Ranger

*"Victoria has all the outdoors you could wish for – mountains, forests, beaches and bushland, all preserved in our parks. Our natural landscapes have been here longer than anyone knows, and together we can make sure they're here forever."*

For more information  
call the Parks Victoria  
Information Centre  
on 13 1963 or  
visit our website at  
[www.parkweb.vic.gov.au](http://www.parkweb.vic.gov.au)

Healthy Parks  
Healthy People

# Mornington Peninsula National Park

## Point Nepean Visitor Guide

Point Nepean was opened to the public in December 1988. Before that it had been out of bounds to most people for more than 100 years.

It still has an air of mystery.

Its associations with early settlement, shipping, quarantine and defence give it great significance and its natural features are diverse.

Access is possible by walking, cycling or on the transport provided. Entrance fees apply.

### Location and Access

Point Nepean is 95 km from Melbourne via the Peninsula Freeway and Point Nepean Road (formerly the Nepean Highway). You can travel by train to Frankston and bus to Portsea. Telephone (03) 9617 0900 for Met information and times.

Vehicle and passenger ferry services operate between Sorrento, Portsea and Queenscliff.

### Discovering Point Nepean

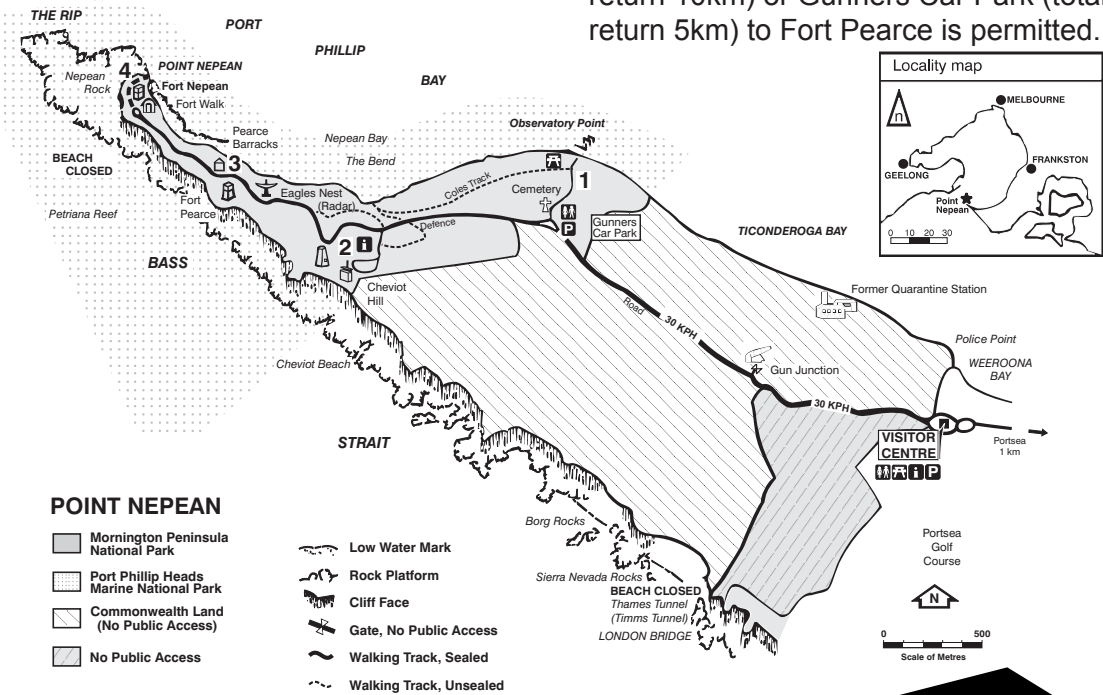
Private cars and buses are not permitted beyond the Gunners Car Park, 2.5km from the Visitors Centre.

Electric barbecues, picnic tables and toilets are available at the centre, which houses displays and audio-visuals.

**To reach Fort Nepean all visitors must walk from Fort Pearce.**

To reach Fort Pearce and features of interest along the way, transport is provided or alternatively you can walk from Gunners Car Park (total return 7km).

Cycling from the Visitor Centre (total return 10km) or Gunners Car Park (total return 5km) to Fort Pearce is permitted.





## Walter Pisterman Heritage Walk

This one kilometre return walk starts at either the Cemetery Transport Stop or Gunners Car Park, and leads through coastal vegetation to the Port Phillip Bay shoreline.

The track has a sealed surface and gentle gradients suitable for wheelchairs.

**Allow 45 minutes for the return walk.**

The track and associated facilities were built in 1991 with funds donated to commemorate the contribution of Walter Pisterman to the community. Along the way, informative signs explain the changes that have taken place over the years since Edward Hobson, the first European settler, arrived in 1837.

**Walter Pisterman (1914 - 1989)**  
Walter Pisterman was dedicated to protecting the natural and cultural environment of Portsea.

He was born in Switzerland and trained as a textile engineer, emigrating to Australia in 1939 and working in the textile, packaging and insurance industries.

Although he lived in Melbourne, he and his family holidayed at Portsea and were committed to many local volunteer organisations and involved with local environment issues.

## Cheviot Hill Discovery Walk

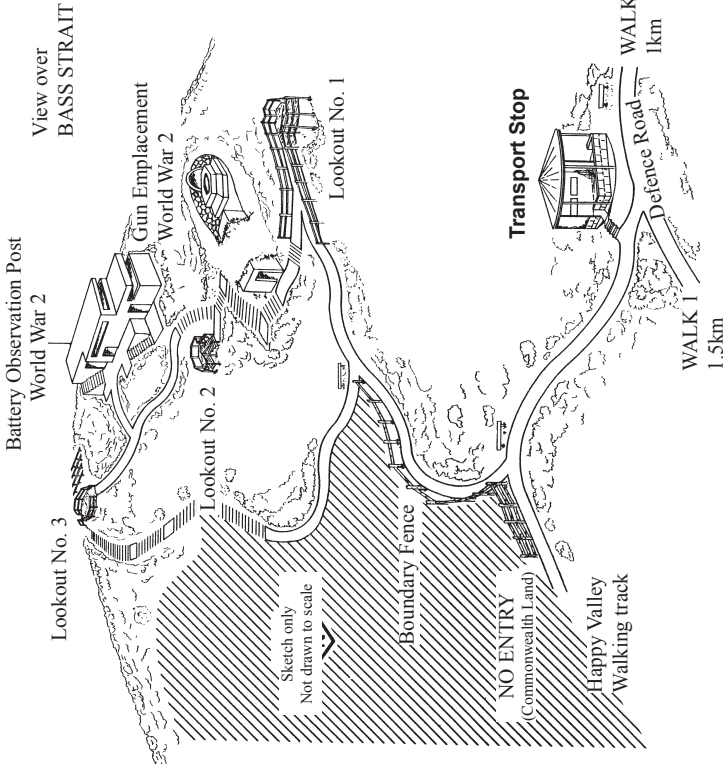
About a kilometre along Defence Road from the Cemetery, a track leads to the top of Cheviot Hill. At 54 metres above sea level, this is the highest spot at Point Nepean, and there are extensive views.

**The walk takes about 45 minutes return.**  
The first part of the track (to the first lookout) is moderately steep but accessible to people with disabilities. The remainder is steeper and includes steps.

Cheviot Beach, where the vessel Cheviot was wrecked in 1887 and from which former Prime Minister Harold Holt disappeared in 1967, can be seen from the summit.

So can the Rip, where many ships have been wrecked since the early days of European settlement.

*Please remain on the track at all times.*



## Fort Pearce and Eagles Nest Heritage Trail

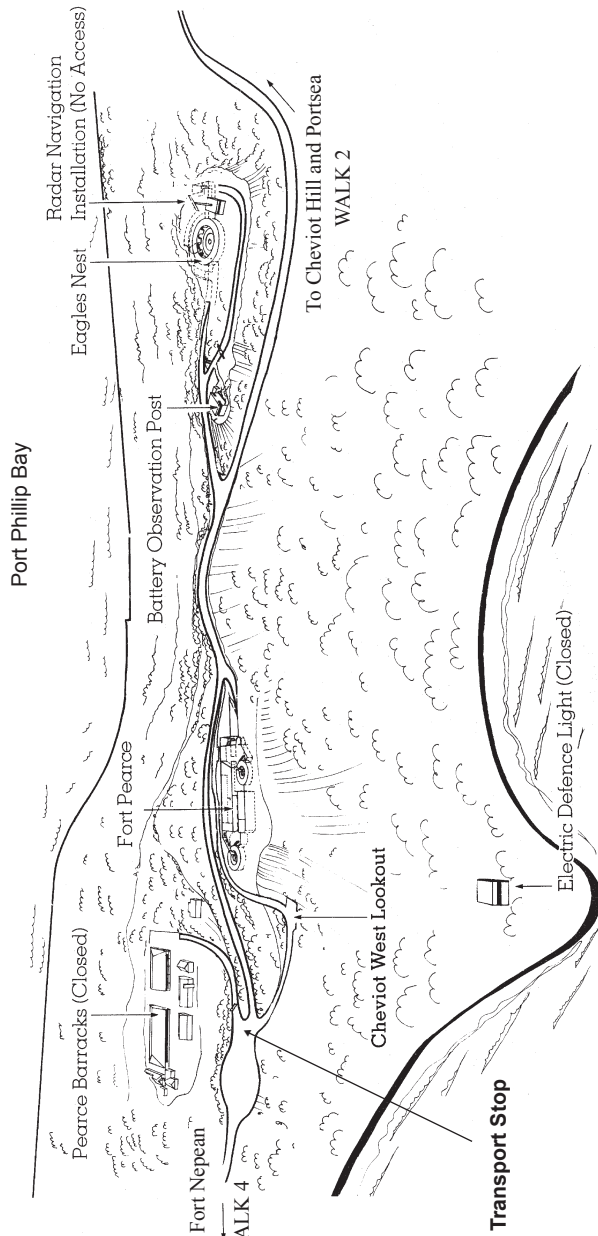
Fort Pearce and Eagle's Nest, once important parts of Port Phillip's defences are now abandoned, wild and windswept vantage points. They were harsh places for those who served them.

The Heritage Trail begins at the track leading to Eagle's Nest. (Pearce Barracks is closed for safety reasons). Some sections of Fort Pearce are also closed, but you can view the fort from boardwalks and lookouts, or descend the concrete ramp to its lower levels.

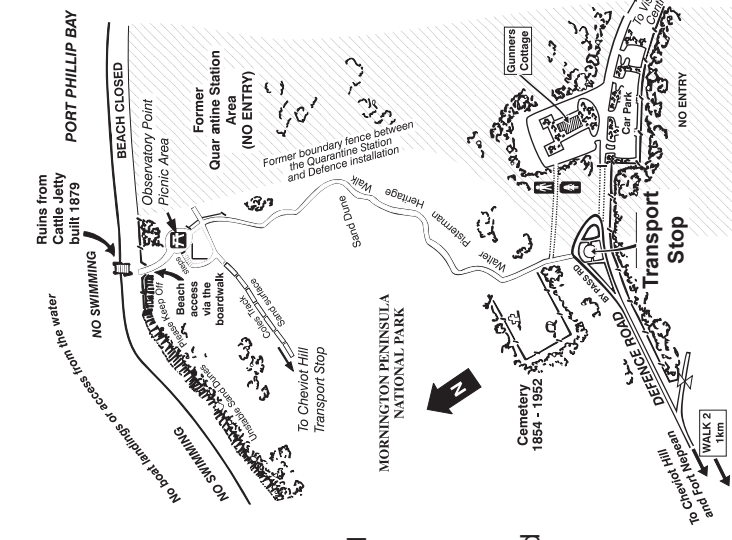
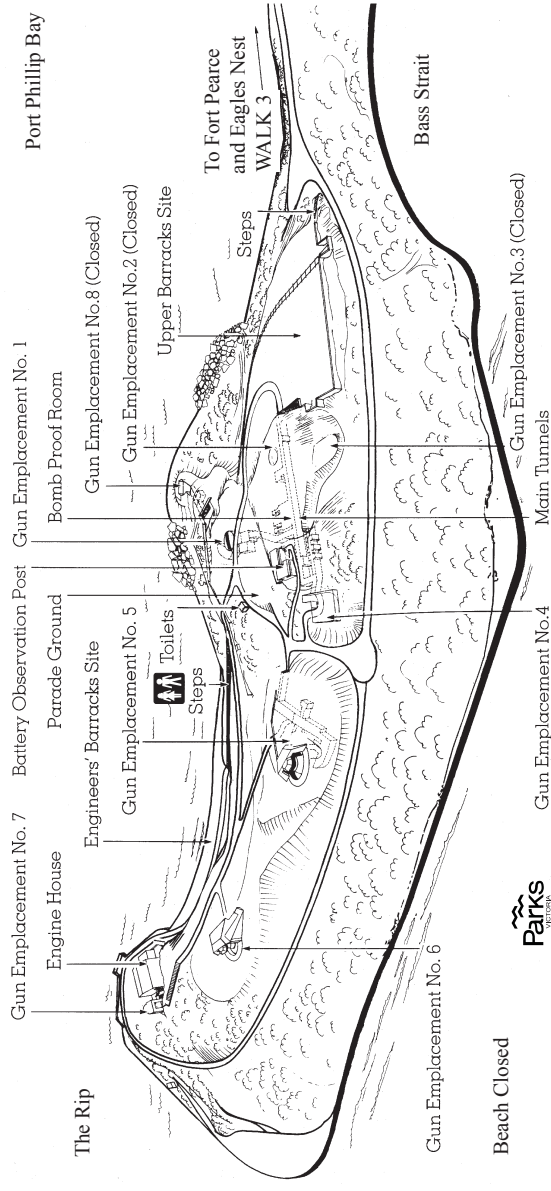
**Allow about 45 minutes to explore the area.**

### Highlights

- See the site of Australia's largest Disappearing Gun at Eagle's Nest.
- Enjoy spectacular views of Port Phillip and the ocean beaches at the Battery Observation Post.
- Find out about early 20th century fortifications, the era of decline and neglect, and the recent rehabilitation works at Fort Pearce.



## Fort Nepean



At **Observatory Point** there is a picnic area with tables. A boardwalk gives wheelchair access to the water's edge, from where you can see the Port Phillip Heads. Adjacent are the remains of a cattle quarantine jetty, built in 1879. As an alternative to returning to the Cemetery you can take a sandy track (Coles Track) running parallel to the beach westwards towards Point Nepean. Walking is permitted along the bay beach but may be difficult at high tide. This track joins Defence Road near the Cheviot Hill Transport Stop. Visitors may walk from Defence Road via Happy Valley to Cheviot Hill.

Signs beside the track and at the lookouts identify landscape features and introduce Point Nepean's Aboriginal history, natural vegetation and defence significance.

To continue to **Fort Nepean** catch the Transport provided at the shelter to Fort Pearce. Alternatively visitors can walk the two kilometres to Fort Nepean via the Machine Gun track and Fort Pearce. This section of roadway provides magnificent views of Port Phillip Bay and the ocean.

## Fort Nepean Walk

Fort Nepean was a vital part of Victoria's defences for more than 60 years, from the 1880s to 1945. Visual and sound displays allow you to find out about the events that led to the building of the fort, developments in defence technology over the years, and the lives of those who served here. **Allow at least 1 hour to explore the area.**

### Highlights

- Listen to stories from the past, in the Bomb Proof Room.
- Descend the dark tunnel to hear the workings of a Disappearing Gun in Gun Emplacement 1.
- Explore the Shell room and underground magazine in Gun Emplacement 5.
- Walk down to the old Engine House and find out about Cooks, Characters, Playing Silly Bugger, World War 11, and the "Mars".